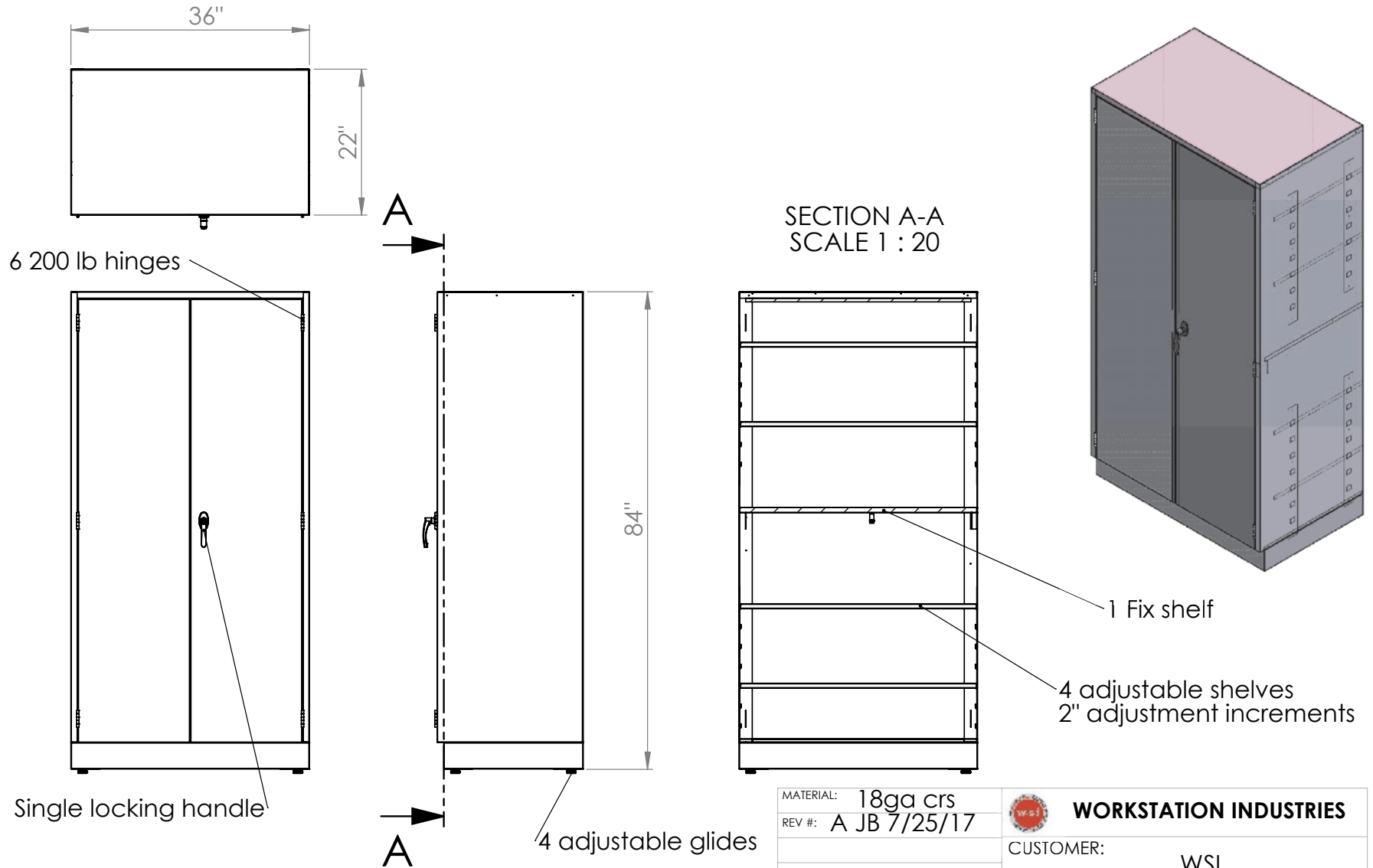


TSTC3622-84



**Workstation Industries**

1938 E Pomona St  
Santa Ana, Cal 92705  
714-258-7535, (f)714-258-1057



MATERIAL: 18ga crs  
REV #: A JB 7/25/17



**WORKSTATION INDUSTRIES**

CUSTOMER: WSI

WO#:

## **tall storage spec sheet 36 x22 x 84h**

Tall welded storage steel cabinet w/4 adjustable shelves, no adjusting hardware needed,

- \* four adjustable shelves w/ no hardware clips for shelves, adjustable clips welded to side wall of cabinet

- \* 150 lb per shelf load rating

- \* One welded fixed center and bottom shelf, to keep cabinet square

- \* Corner gusset for side to side strength,

- \* 200lb stainless steel institutional hinges

- \* Single locking handle, locks under center fixed shelf side door has a locking return flange to keep closed,

Lab grade zink plated adj glides 1.5" optional 2.5" high is also available,

- \* 18ga steel cold rolled steel,

- \* Width range 18-48" 60" wide available upon request

- \* Depth 22" other sized upon request as a special

- \* 4" toe kick

- \* glides recess into the body of the cabinet and can adjust 1" optional 2" adjustment, advise which size desired upon the PO and quotation phase no charge for the upgrade glide size