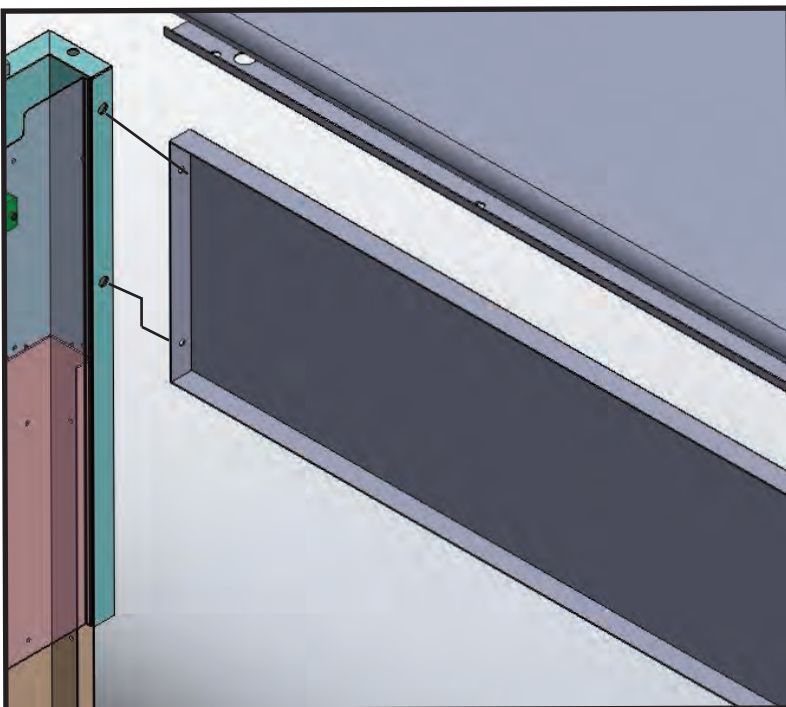


1A



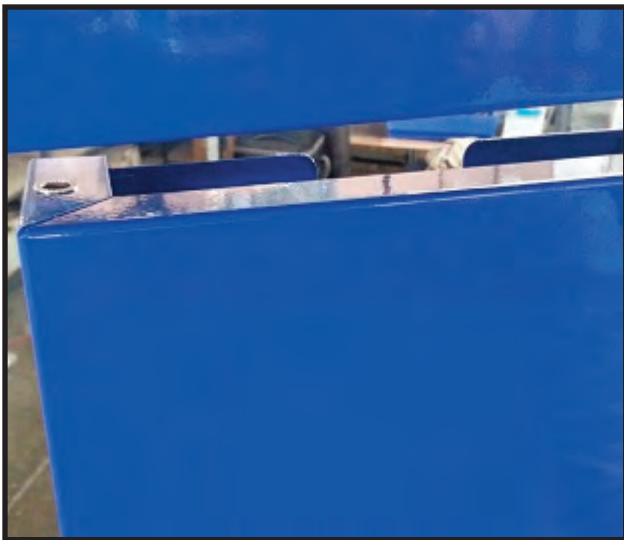
- 1) Work surface
- 2) Top support brackets
- 3) Front and rear beam
- 4) Rear panel
- 5) leg assembly
- 6) Lower cross beam

2A

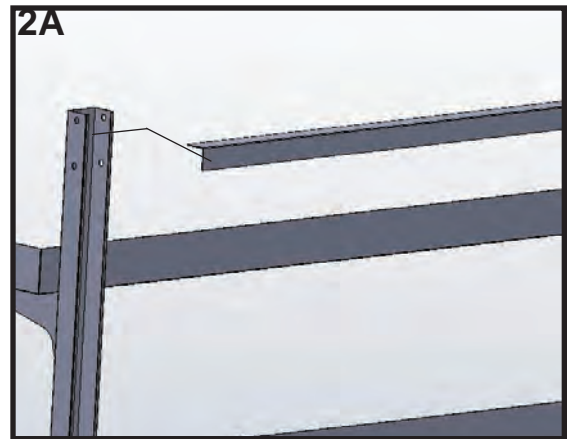


First inspect the skid for any damage, if damage report to the friehgt company and take photos of all the packaging and the condition of the delivered slid

- 1) Locate both legs, right and left leg (Item #5)
- 2) Attach the rear panel (item #4) to each leg item #5 using the tread bolts, see photo 1A
- 3) Install the cylinder into the leg #1A, slide the Cyl in between the green clamps in the leg make sure the cylinder in place straight and down to the bottom, see photo 1A
- 4) Install the top support bracket to each leg #2 tighten, see photo 3A
- 5) Install each load beam, front and rear to the support bracket, tighten
- 6) Attached the lower beam to the bottom of the frame, this will keep the frame straight #6
- 7) Install the work surface to the frame. #1 using the 1" wood screws  
2" spacing from the frame to the edge of the w/surface on all sides,
- 8) Attached the slotted upright to the work surface by sliding the "C" clamp bracket onto the work surfcae,
- 9) 3" spacing from the edge of the work surfcae to the center of the upright secure using wood screws to the under side and the top of the upright bracket
- 10) attach to the top cross bar to the top of the slide uprihts #2A



4A



3A

