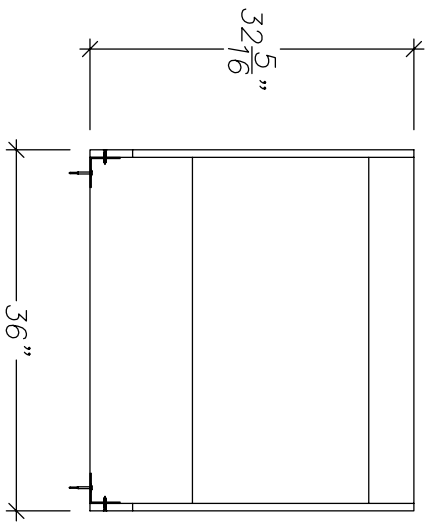
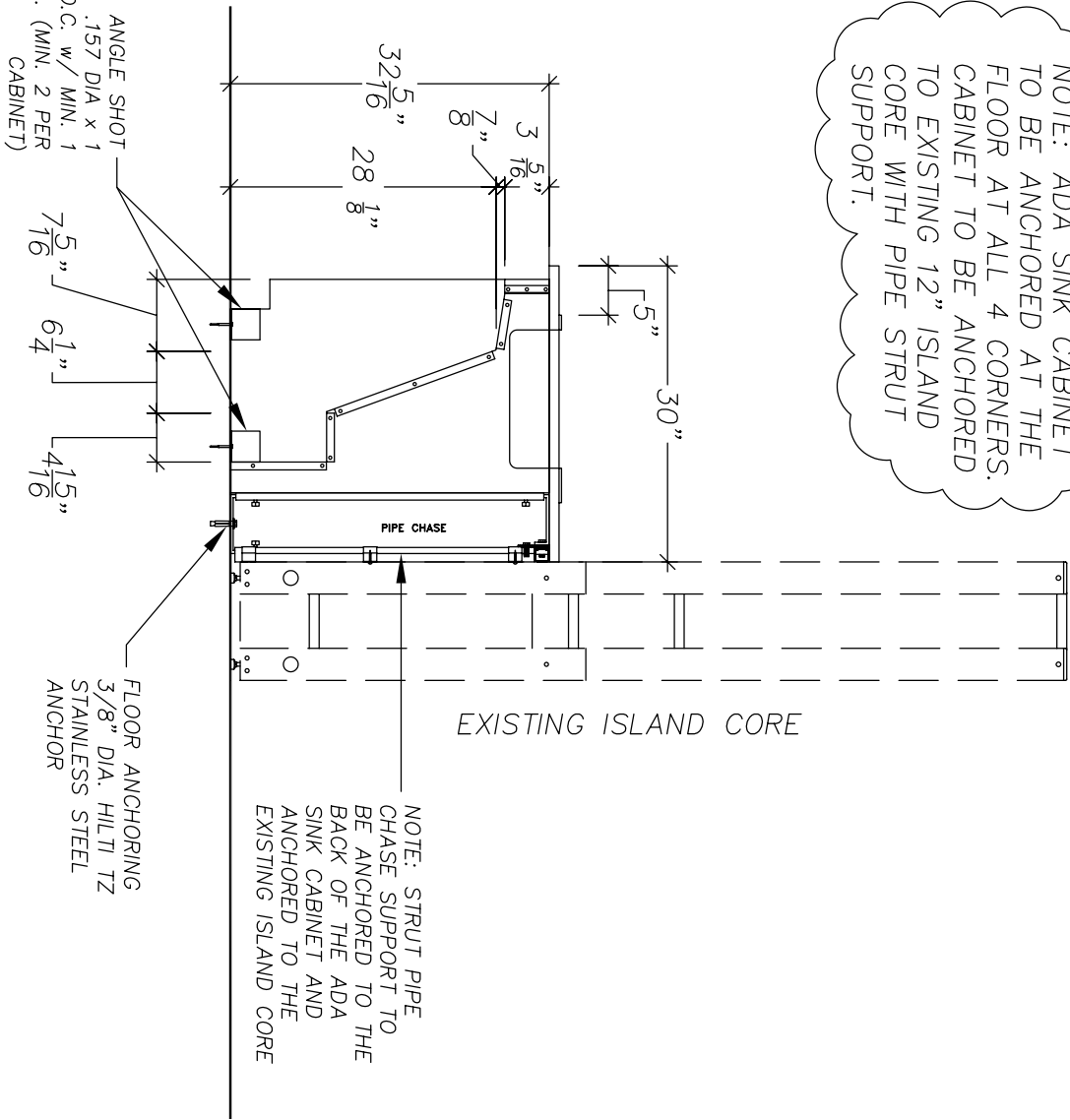


NOTE: ADA SINK CABINET TO BE ANCHORED AT THE FLOOR AT ALL 4 CORNERS. CABINET TO BE ANCHORED TO EXISTING 12" ISLAND CORE WITH PIPE STRUT SUPPORT.



FRONT ELEVATION VIEW

16ga 3"x3"x3" METAL ANGLE SHOT DOWN WITH A HILTI .157 DIA x 1 1/4" PIN @ 24" O.C. w/ MIN. 1 1/8" PENETRATION. (MIN. 2 PER CABINET)



SECTION BB - VIEW OF ADA SINK CABINET