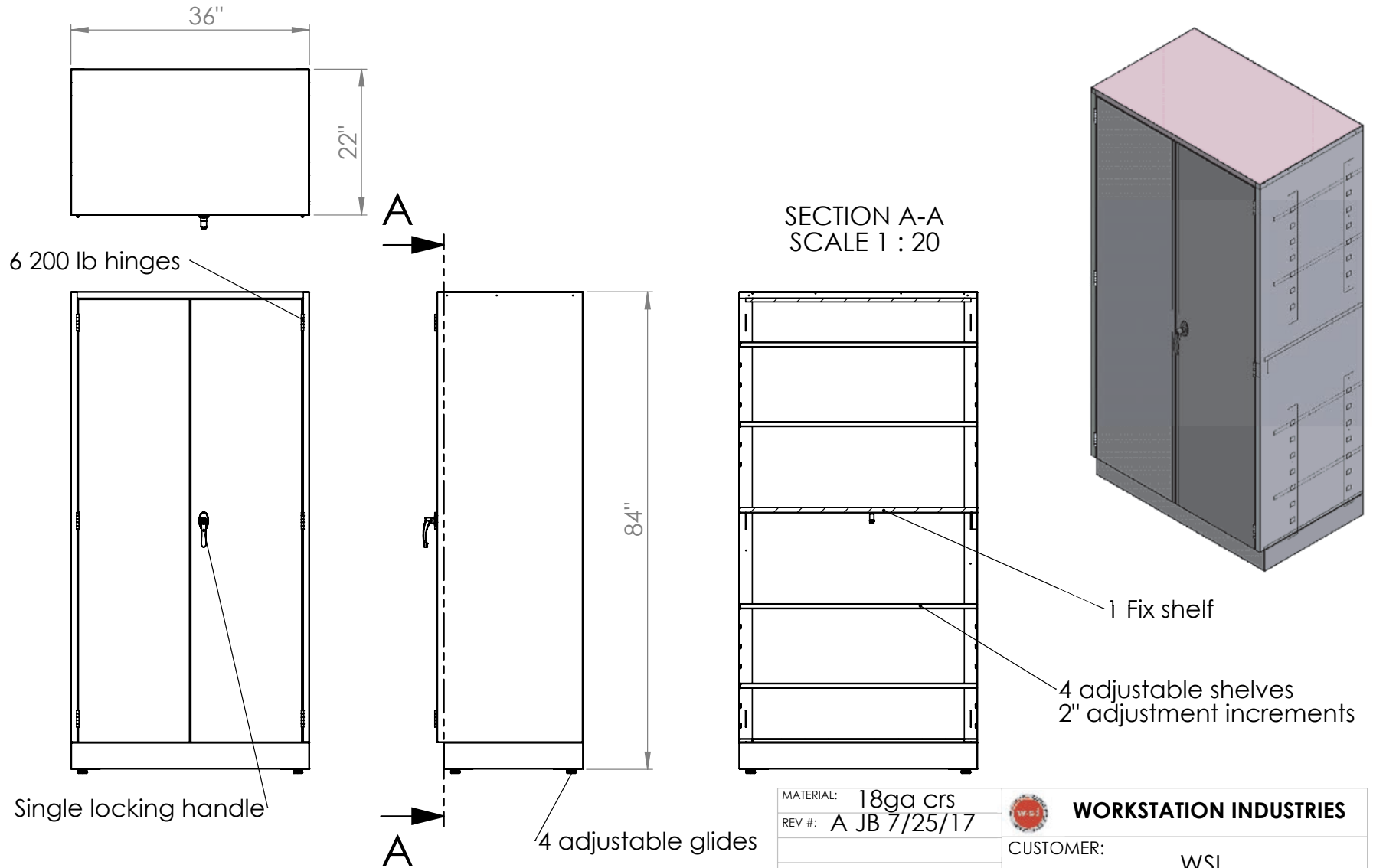


TSTC3622-84



**Workstation Industries**

1938 E Pomona St  
Santa Ana, Cal 92705  
714-258-7535, (f)714-258-1057



MATERIAL: 18ga crs  
REV #: A JB 7/25/17



**WORKSTATION INDUSTRIES**

CUSTOMER: WSI

WO#:



**WorkStation Industries**

**STSC362284**

1938 E pomona st  
Santa ana, Ca 927805  
(o) 714-258-7535  
(f) 714-58-1057  
(e) sales @workstationindustries.com  
(w) www.workstationindustries.com

- Tall storage cab xxW x 22D x 84h, constructed of 18ga heavy duty cold rolled steel
- four adjustable shelves w/ no hardware clips for shelves, adjustable clips welded to side wall of cabinet
- 150 lb per shelf load rating \* One welded fixed center and bottom shelf, to keep cabinet square Corner gusset for side to side strength,
- 200lb stainless steel institutional hinges
- Single locking handle, locks under center fixed shelf side door has a locking return flange to keep closed, Lab grade zink plated adj glides 1.5" optional 2.5" high is also available,
- 18ga steel cold rolled steel, \* Width range 18-48" 60" wide available upon request
- Depth 22" other sized upon request as a special 4" toe kick glides recess into the body of the cabinet and can adjust 1" optional 2" adjustment, advise which size desired upon the PO abnd quotation phase
- no charge for the upgrade glide size
-